



Government of India  
Ministry of Earth Sciences  
India Meteorological Department



Press Release

Date: 24<sup>th</sup> July, 2025

Time of Issue: 1330 hours IST

**Subject: i) Under the influence of Low pressure area over north Bay of Bengal, extremely heavy rainfall likely over Odisha on 24<sup>th</sup> & 25<sup>th</sup>; Chhattisgarh on 25<sup>th</sup> & 26<sup>th</sup>; Madhya Pradesh on 26<sup>th</sup> & 27<sup>th</sup>; Konkan, ghat areas of Madhya Maharashtra, Vidarbha and Gangetic West Bengal on 25<sup>th</sup> July.**  
**ii) Monsoon conditions are likely to be in active phase over central & east India and along the west coast & adjoining ghat areas during next 4-5 days.**

**Realised weather during past 24 hours till 0830 hours IST of today, the 24<sup>th</sup> July, 2025:**

- ❖ **Extremely heavy falls ( $\geq 21$  cm)** has been recorded at isolated places over Telangana and Vidarbha.
- ❖ **Heavy to very heavy rainfall (7-20 cm)** has been recorded at isolated places over Coastal & South Interior Karnataka, Chhattisgarh, West Madhya Pradesh, Odisha, Jharkhand, Tripura; **Heavy rainfall (7-11 cm)** at isolated places over East Rajasthan, West Uttar Pradesh, Haryana, East Madhya Pradesh, Gangetic West Bengal, Tamil Nadu, Konkan, Madhya Maharashtra, Kerala and Bihar.

**For more details of realised weather, kindly refer [Annexure I](#).**

**i. Weather Systems, Forecast and Warnings (refer to [Annexure II & III](#)):**

- ❖ The monsoon trough at mean sea level runs near its normal position.
- ❖ The Remnant of Tropical Cyclone "WIPHA" emerged over north Bay of Bengal and under its influence, a Low Pressure area formed over the same region at 0530 hrs IST of today and it persisted over the same region at 0830 hrs IST of today, the 24<sup>th</sup> July 2025. It is likely to move west-northwestwards and become a **Well Marked Low Pressure Area over Northwest Bay of Bengal & adjoining west Bengal and Bangladesh coasts during next 24 hours**. It is likely to continue to move west-northwestwards towards West Bengal & adjoining North Odisha coasts during subsequent 24 hours.
- ❖ A **trough** runs from Vidarbha to the cyclonic circulation associated with **low Pressure** area over north Bay of Bengal across south Chhattisgarh in middle tropospheric levels.
- ❖ The **Western Disturbance** as a cyclonic circulation over Jammu & Kashmir and adjoining Himachal Pradesh in lower & middle tropospheric levels persists.
- ❖ An off-shore **trough** at sea level runs along Maharashtra-Kerala coasts.

Under the influence of these systems, the following weather is likely:

**East & Central India:**

- ✓ **Extremely heavy rainfall** is very likely at isolated places over Odisha on 24<sup>th</sup> & 25<sup>th</sup>; Chhattisgarh on 25<sup>th</sup> & 26<sup>th</sup>; Madhya Pradesh on 26<sup>th</sup> & 27<sup>th</sup>; Vidarbha and Gangetic West Bengal on 25<sup>th</sup> July.
- ✓ Isolated **heavy to very heavy rainfall** very likely to continue over Madhya Pradesh, Vidarbha, Chhattisgarh, Odisha, Gangetic West Bengal, Jharkhand during 24<sup>th</sup>-28<sup>th</sup>; isolated **heavy rainfall** over Bihar, Sub-Himalayan West Bengal & Sikkim during 24<sup>th</sup>-27<sup>th</sup> July.
- ✓ Light to moderate rainfall at most places accompanied with thunderstorm, lightning & gusty winds (speed reaching 30-40 Kmph) likely over the region during next 7 days with **moderate lightning over Bihar on 24<sup>th</sup> & 25<sup>th</sup> July**.

**South Peninsular India:**

- ✓ **Extremely heavy rainfall** very likely at isolated places over Coastal Karnataka on 24<sup>th</sup> July.

- ✓ Isolated **heavy to very heavy rainfall** likely over Kerala & Mahe, Coastal & South Interior Karnataka during 24<sup>th</sup>-29<sup>th</sup>; isolated **heavy rainfall** over Tamil Nadu, Telangana, Coastal Andhra Pradesh & Yanam, North Interior Karnataka during 24<sup>th</sup>-27<sup>th</sup> July with isolated **very heavy rainfall** over Telangana and Coastal Andhra Pradesh & Yanam on 24<sup>th</sup> & 25<sup>th</sup> July.
- ✓ **Strong surface winds** (speed reaching 40-50 kmph) very likely over South Peninsular India during next 5 days.
- ✓ Light to moderate rainfall at most/many places over Kerala & Mahe, Lakshadweep, Karnataka, Rayalaseema, Coastal Andhra Pradesh & Yanam and Telangana during next 7 days.

#### **West India:**

- ✓ **Extremely heavy rainfall** very likely at isolated places over Konkan and Ghat areas of Madhya Maharashtra on 25<sup>th</sup> July.
- ✓ **Heavy to very heavy rainfall** likely at isolated to some places over Konkan & Goa, Ghat areas of Madhya Maharashtra during 24<sup>th</sup>-30<sup>th</sup> July and **heavy rainfall** over Marathawada on 25<sup>th</sup> & 26<sup>th</sup>; Gujarat region during 25<sup>th</sup>-29<sup>th</sup>; Saurashtra & Kutch during 26<sup>th</sup>-29<sup>th</sup> July with isolated **very heavy rainfall** over Gujarat Region on 27<sup>th</sup> & 28<sup>th</sup> July.
- ✓ Light to moderate rainfall at many places very likely over the region during next 6-7 days.

#### **Northwest India:**

- ✓ Isolated **very heavy rainfall over East Rajasthan on 27<sup>th</sup> & 28<sup>th</sup> and West Uttar Pradesh on 28<sup>th</sup> July.**
- ✓ Isolated **heavy rainfall** likely over Jammu and Kashmir on 29<sup>th</sup> & 30<sup>th</sup>; Himachal Pradesh, East Rajasthan during 26<sup>th</sup>-30<sup>th</sup>; Uttarakhand during 24<sup>th</sup>-30<sup>th</sup>; Punjab, Haryana on 27<sup>th</sup> & 28<sup>th</sup>; West Uttar Pradesh during 25<sup>th</sup>-30<sup>th</sup>; East Uttar Pradesh during 24<sup>th</sup>-30<sup>th</sup> July.
- ✓ Light/moderate rainfall at many places accompanied with thunderstorm, lightning likely over Western Himalayan region and some places over the plains during next 7 days.

#### **Northeast India:**

- ✓ Light/moderate rainfall at many places accompanied with **thunderstorm, lightning and isolated heavy rainfall** likely to continue over Northeast India during next 5 days with **very heavy rainfall** over Arunachal Pradesh and Mizoram & Tripura on 26<sup>th</sup> July.

#### **Fishermen Warnings:**

Fishermen are advised to avoid venturing into the following from 24<sup>th</sup> July to 29<sup>th</sup> July 2025 to the following Areas:

- ❖ **Arabian Sea:** Along and off Gujarat, Konkan, Goa, Karnataka, Kerala coasts and adjoining sea area; over Lakshadweep, Maldives, Comorin areas, many parts of southeast, eastcentral, northeast Arabian Sea & some parts of southwest, few parts of westcentral Arabian Sea along and off the Somalia coast and adjoining sea areas, south Oman and adjoining Yemen coast & adjoining sea areas during 24<sup>th</sup> to 29<sup>th</sup> July.
- ❖ **Bay of Bengal:** Andhra Pradesh, Odisha, Gangetic West Bengal, Bangladesh, Myanmar coasts, Gulf of Mannar, Andaman Sea during 24<sup>th</sup> to 29<sup>th</sup> July; most parts of South Bay of Bengal, entire and central and north Bay of Bengal; along and off Tamil Nadu coast during 24<sup>th</sup> to 28<sup>th</sup> July; north Andaman Sea during 28<sup>th</sup> to 29<sup>th</sup> July.

#### **ii. Weather conditions and forecast over Delhi/NCR during 24<sup>th</sup> to 27<sup>th</sup> July, 2025 (Annexure IV)**

For more details, kindly refer National Weather Bulletin:

[https://mausam.imd.gov.in/responsive/all\\_india\\_forecast\\_bulletin.php](https://mausam.imd.gov.in/responsive/all_india_forecast_bulletin.php)

For District wise warnings refer: <https://mausam.imd.gov.in/responsive/districtWiseWarningGIS.php>

**Rainfall recorded (in cm) during past 24 hours till 0830 hours IST of today, the 24<sup>th</sup> July:**

- ❖ **Vidarbha:** Mulchera (dist Gadchiroli) 24; Ahiri (dist Gadchiroli) 13; Umrer (dist Nagpur) 12; Dhanora (dist Gadchiroli), Ballarpur (dist Chandrapur), Korpana (dist Chandrapur) 9 Each; Chimur (dist Chandrapur), Chandrapur (dist Chandrapur), Sakoli (dist Bhandara) 8 Each; Rajura (dist Chandrapur) 7;
- ❖ **Telangana:** Bejjur (dist Kumaram Bheem) 24; Venkatapuram (dist Mulugu) 23; Karimnagar (dist Karimnagar) 12; Eturnagaram (dist Mulugu) 10; Mogullapalle (dist J. Bhupalpally), Malyal (dist Mahabubabad) 9 Each; Dubbak (dist Siddipet), Manuguru (dist B. Kothagudem) 8 Each; Thimmapur (dist Karimnagar), Karimnagar AP (dist Karimnagar), Kothaguda (dist Mahabubabad), Naykal (dist Sangareddy), Shankarapatnam (dist Karimnagar), Tadwai Mlg (dist Mulugu), Chityal (dist J. Bhupalpally), Nallabelly (dist Warangal) 7 Each;
- ❖ **Chhattisgarh:** Bamhndih (dist Janjgir) 17; Akaltara (dist Janjgir) 13; Bilaspur (dist Bilaspur), Janjgir (dist Janjgir), Gharghoda (dist Raigarh) 12 Each; Champa (dist Janjgir), Manendragarh (dist Manendragarh Bharatpur), Pendra (dist Gaurela Pendra Marwahi), Lormi (dist Mungeli), Navagarh (dist Janjgir), Bodari (dist Bilaspur), Bhothiya (dist Sakti) 10 Each; Pendra Road (dist Gaurela Pendra Marwahi), Masturi (dist Bilaspur), Takhatpur (dist Bilaspur), Pipariya (dist Kabirdham), Saragaon (dist Janjgir), Naya Baradwar (dist Sakti), Aundhi (dist Mohala Manpur Chowki) 9 Each; Bhopalpatnam (dist Bijapur), Dondilohara (dist Balod), Surajpur (dist Surajpur), Pamgarh (dist Janjgir), Baloda (dist Janjgir), Malkharoda (dist Sakti), Kartala (dist Korba), Pachpedi (dist Bilaspur), Sakri (dist Bilaspur), Belgahna (dist Bilaspur), Lalpur Thana (dist Mungeli), Adbhar (dist Sakti), Nangur (dist Bastar) 8 Each; Dongargaon (dist Rajnandgaon), Dongargarh (dist Rajnandgaon), Darbha (dist Bastar), Bilha (dist Bilaspur), Marwahi (dist Gaurela Pendra Marwahi), Seovrinarayan (dist Janjgir), Jaijaipur (dist Sakti), Patharia (dist Mungeli), Latori (dist Surajpur), Lal Bahadur Nagar (dist Rajnandgaon), Seepat (dist Bilaspur), Hasaud (dist Sakti), Chhal (dist Raigarh) 7 Each;
- ❖ **West Madhya Pradesh:** Maksudangarh (dist Guna) 15; Narsingarh (dist Rajgarh) 13; Itarsi (dist Narmadapuram) 12; Chanderi (dist Ashoknagar), Salwani (dist Raisen) 11 Each; Zirapur (dist Rajgarh) 10; Bareli (dist Raisen) 9; Mungaoli (dist Ashoknagar), Pachmarhi (dist Narmadapuram), Morena-aws (dist Morena), Raghogarh (dist Guna) 8 Each; Biaora (dist Rajgarh), Khilchipur (dist Rajgarh), Ater (dist Bhind), Gormi (dist Bhind) 7 Each;
- ❖ **South Interior Karnataka:** Agumbe AWS (dist Shivamogga) 15; Sringeri HMS (dist Chikkamagaluru) 7;
- ❖ **Coastal Karnataka:** Gersoppa (dist Uttara Kannada) 15; Karwar (dist Uttara Kannada), Honavar (dist Uttara Kannada) 14 Each; Manki (dist Uttara Kannada) 13; Shirali PTO (dist Uttara Kannada) 12; Siddapura (dist Udupi), Kota (dist Udupi) 11 Each; Castle Rock (dist Uttara Kannada) 10; Udupi (dist Udupi), Gokarna (dist Uttara Kannada), Kadra (dist Uttara Kannada), Kumta (dist Uttara Kannada), Mangaluru (dist Dakshina Kannada) 9 Each; Mangaluru AP (dist Dakshina Kannada), Shakti Nagar (dist Dakshina Kannada), Karkala (dist Udupi), Kundapur (dist Udupi) 8 Each; Mani (dist Dakshina Kannada), Ankola (dist Uttara Kannada) 7 Each;
- ❖ **Nagaland, Manipur, Mizoram & Tripura:** Teliamura ARG (dist Khowai) 13; Gokulpur AWS (dist Gomati), Saiha (dist Saiha) 10 Each; Sonamura (dist Sipahijala), Sonamura ARG (dist Sipahijala) 9 Each; Bishalgarh (dist Sipahijala) 8;
- ❖ **Odisha:** Jhorigam (dist Nawarangpur) 13; Athmalik (dist Angul), Reamal (dist Deogarh) 11 Each; Banki (dist Cuttack), Raikia (dist Kandhamal) 10 Each; Umarmkote (dist Nawarangpur), Jujumura (dist Sambalpur), Belanguntha (dist Ganjam), Ganjam (dist Ganjam) 9 Each; Pallahara (dist Angul), Bhuban (dist Dhenkanal), Madhabarida (dist Ganjam), Jamankira (dist Sambalpur) 8 Each; Bhubaneswar AP (dist Khurda), Hemgiri (dist Sundargarh) 7 Each;
- ❖ **East Madhya Pradesh:** Malthone (dist Sagar) 11; Gohparu (dist Shahdol) 10; Kotma (dist Anuppur) 9; Bina (dist Sagar) 8; Patharia (dist Damoh), Bajag (dist Dindori), Amarpur (dist Dindori), Samnapur (dist Dindori), Venkatnagar (dist Anuppur), Bilhari (dist Katni) 7 Each;
- ❖ **Madhya Maharashtra:** Mahabaleshwar (dist Satara) 11; Gaganbawada (dist Kolhapur) 9;
- ❖ **West Uttar Pradesh:** Meerut (dist Meerut) 11; Meerut Teh (dist Meerut), Mawana (dist Meerut), Sardhana (dist Meerut) 10 Each; Gunnaur (dist Sambhal), Madawara (dist Lalitpur), Kasganj (dist Kasganj), Hasanpur (dist Amroha) 7 Each;
- ❖ **Tamil Nadu, Puducherry & Karaikal:** Chinnakalar (dist Coimbatore) 10; Valparai PTO (dist Coimbatore), Sholayar (dist Coimbatore), Cincona (dist Coimbatore) 7 Each;
- ❖ **Kerala & Mahe:** Udumbannoor AWS (dist Idukki) 10; Peermade To (dist Idukki), Idukki (dist Idukki) 9 Each; Mancompu (dist Alapuzha), Haripad (dist Alapuzha), Konni (dist Pathanamthitta), Kannur (dist Cannur), Bayar AWS (dist Kasargod), Laha AWS (dist Pathanamthitta), Ranni AWS (dist Pathanamthitta) 8 Each; Kurudamannil (dist Pathanamthitta), Mavelikara (dist Alapuzha), Hosdurg (dist Kasargod), Perumpavur (dist Ernakulam), Konni ARG (dist Pathanamthitta), Kannur Icar AWS (dist Cannur), Kunnathanam AWS (dist Pathanamthitta) 7 Each;
- ❖ **Jharkhand:** Garu (dist Latehar) 10; Dhurki (dist Garhwa) 8;
- ❖ **Konkan & Goa:** Mandangad (dist Ratnagiri), Mhasla (dist Raigad) 10 Each; Kudal (dist Sindhudurg), Chiplun (dist Ratnagiri), Sawantwadi (dist Sindhudurg), Wakwali ARG (dist Ratnagiri), Vaibhavwadi (dist Sindhudurg), Poladpur (dist Raigad) 9 Each; Shriwardhan (dist Raigad), Valpoi (dist North Goa), Karjat ARG (dist Raigad), Canacona (dist South Goa), Tala (dist Raigad), Rajapur (dist Ratnagiri) 8 Each; Sanguem (dist South Goa), Roha (dist Raigad), Mulde ARG (dist Sindhudurg), Dapoli ARG (dist Ratnagiri), Savarde-arg (dist Ratnagiri), Quepem (dist South Goa) 7 Each;
- ❖ **East Rajasthan:** Atru SR (dist Baran) 9; Manohar Thana (dist Jhalawar), Ramganjmandi SR (dist Kota) 7 Each;
- ❖ **Haryana:** Hassanpur (dist Palwal) 8; Rohtak (dist Rohtak), Rohtak REV (dist Rohtak) 7 Each;
- ❖ **Bihar:** Dumaria (dist Gaya) 8; Jahanabad (dist Jahanabad) 7;
- ❖ **Gangetic West Bengal:** Basirhat(pt) (dist North 24 Parganas) 7.

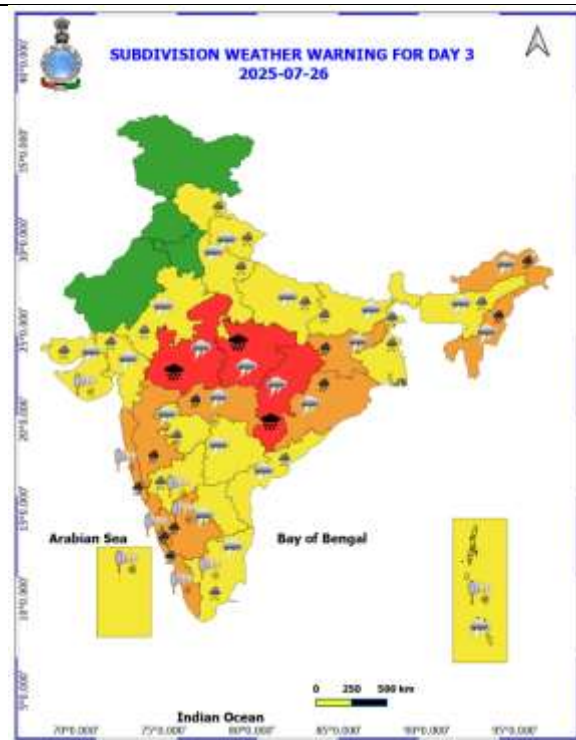
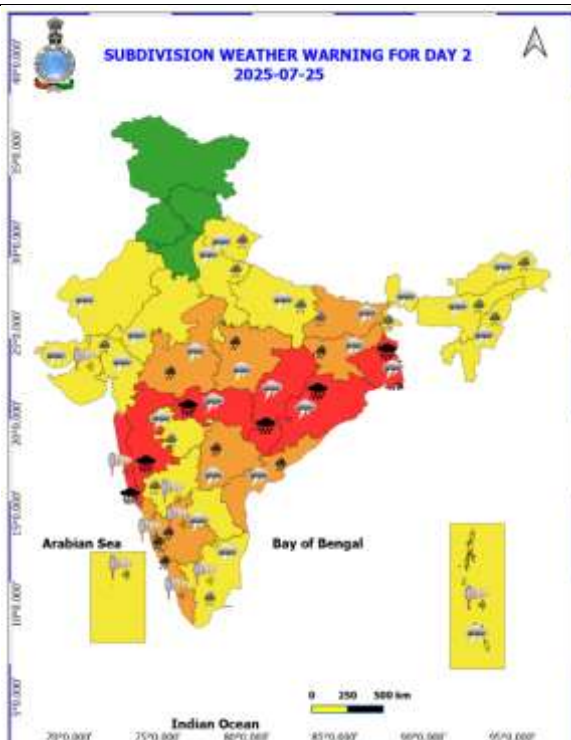
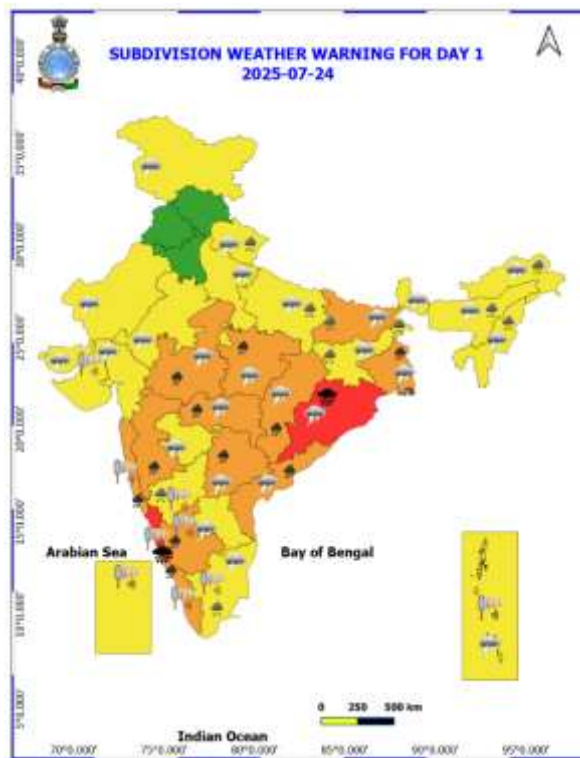
## ANNEXURE II

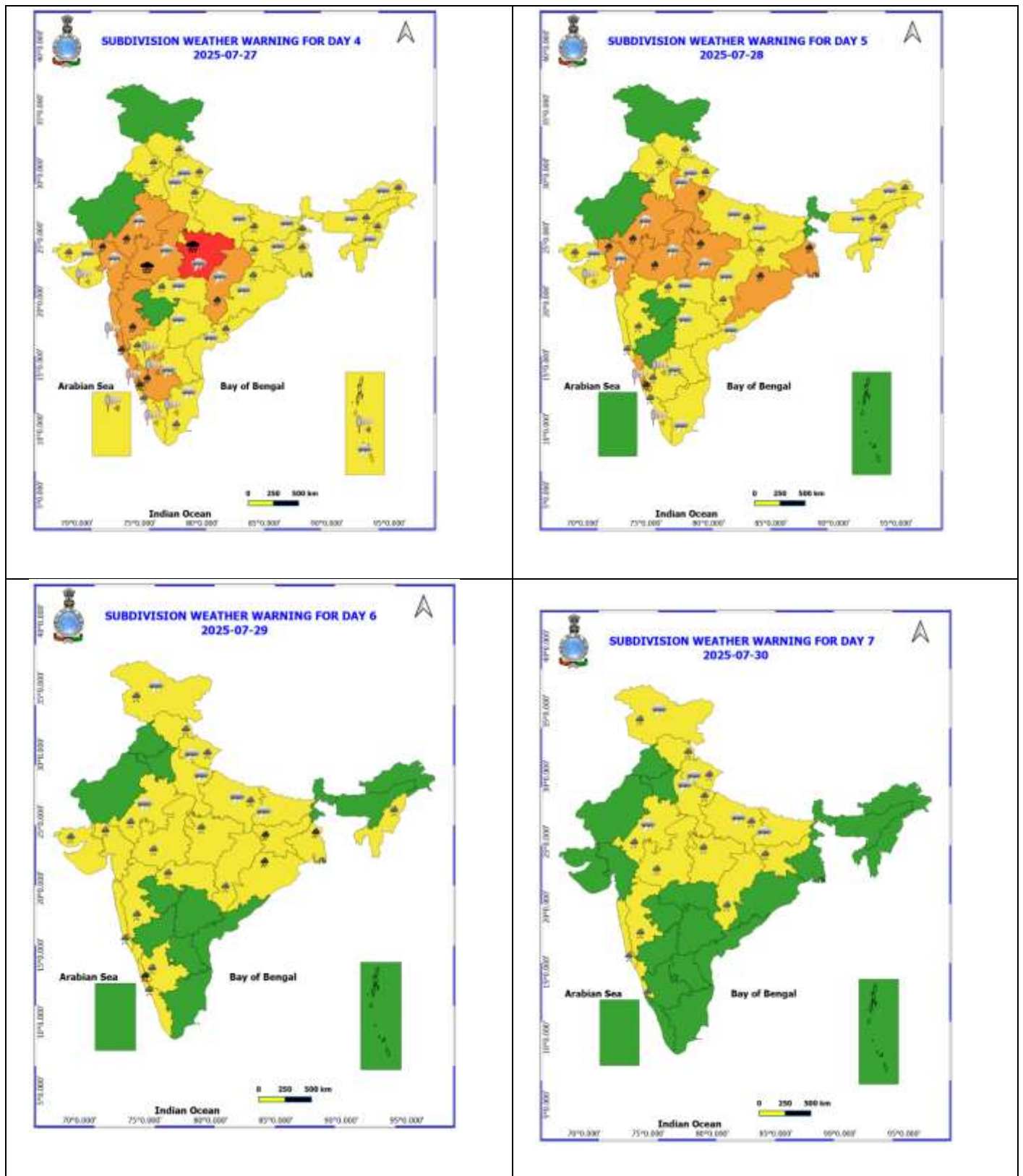
Table-1								
7 Days Rainfall Forecast								
S.No.	Subdivision	24- Jul	25- Jul	26- Jul	27- Jul	28- Jul	29- Jul	30- Jul
		Day 1	Day 2	Day 3	Day 4	Day 5	Day 6	Day 7
1	ANDAMAN & NICOBAR ISLANDS	FWS	FWS	FWS	FWS	SCT	FWS	FWS
2	ARUNACHAL PRADESH	SCT	FWS	WS	FWS	SCT	SCT	SCT
3	ASSAM & MEHGHALAYA	SCT	FWS	WS	FWS	SCT	SCT	SCT
4	NAGALAND, MANIPUR, MIZORAM AND TRIPURA	FWS	FWS	WS	FWS	FWS	FWS	SCT
5	SUB HIMALAYAN WEST BENGAL & SIKKIM	FWS	WS	FWS	FWS	FWS	FWS	FWS
6	GANGETIC WEST BENGAL	WS	WS	WS	WS	WS	WS	FWS
7	ODISHA	WS	WS	WS	FWS	WS	FWS	FWS
8	JHARKHAND	WS	WS	WS	WS	WS	WS	FWS
9	BIHAR	SCT	FWS	FWS	FWS	SCT	SCT	SCT
10	EAST UTTAR PRADESH	SCT	FWS	SCT	SCT	FWS	FWS	FWS
11	WEST UTTAR PRADESH	ISOL	SCT	FWS	FWS	FWS	SCT	SCT
12	UTTARAKHAND	SCT	FWS	FWS	FWS	WS	FWS	FWS
13	HARYANA, CHANDIGARH & DELHI	ISOL	ISOL	ISOL	FWS	FWS	SCT	SCT
14	PUNJAB	ISOL	ISOL	ISOL	SCT	SCT	SCT	SCT
15	HIMACHAL PRADESH	SCT	SCT	FWS	WS	WS	FWS	FWS
16	JAMMU AND KASHMIR AND LADAKH	FWS	SCT	SCT	FWS	FWS	FWS	FWS
17	WEST RAJASTHAN	ISOL	ISOL	ISOL	ISOL	ISOL	ISOL	ISOL
18	EAST RAJASTHAN	SCT	SCT	SCT	FWS	FWS	FWS	FWS
19	WEST MADHYA PRADESH	FWS	WS	WS	WS	WS	WS	WS
20	EAST MADHYA PRADESH	WS	WS	WS	WS	WS	WS	WS
21	GUJRAT REGION	FWS	FWS	FWS	WS	WS	WS	FWS
22	SAURASHTRA & KUTCH	SCT	SCT	FWS	WS	WS	WS	FWS
23	KONKAN & GOA	WS	WS	WS	WS	WS	WS	WS
24	MADHYA MAHARASHTRA	FWS	FWS	FWS	FWS	SCT	SCT	SCT
25	MARATHWADA	SCT	FWS	FWS	ISOL	ISOL	ISOL	ISOL
26	VIDARBHA	WS	WS	WS	WS	FWS	FWS	WS
27	CHHATTISGARH	WS	WS	WS	WS	WS	WS	WS
28	COASTAL ANDHRA PRADESH	WS	FWS	FWS	SCT	SCT	ISOL	ISOL
29	TELANGANA	WS	WS	SCT	ISOL	ISOL	ISOL	ISOL
30	RAYALASEEMA	SCT	SCT	SCT	SCT	ISOL	ISOL	ISOL
31	TAMILNADU & PUDUCHERRY	ISOL	ISOL	ISOL	ISOL	ISOL	ISOL	ISOL
32	COSTAL KARNATAKA	WS	WS	WS	WS	WS	WS	WS
33	NORTH INTERIOR KARNATAKA	WS	FWS	FWS	FWS	SCT	SCT	SCT
34	SOUTH INTERIOR KARNATAKA	WS	FWS	FWS	FWS	SCT	SCT	SCT
35	KERALA AND MAHE	WS	WS	WS	WS	WS	WS	WS
36	LAKSHADWEEP	WS	WS	WS	WS	FWS	FWS	FWS

- As the lead period increases forecast accuracy decrease.



### ANNEXURE III





- Action may be taken based on ORANGE AND REDCOLOUR warnings.
- Vulnerable regions likely urban and hilly areas action may be initiated for heavy rainfall warning.
- As the lead period increases forecast accuracy decreases.

Detailed districtwise Multi Hazard weather warning for next five days available at <https://mausam.imd.gov.in/responsive/districtWiseWarningGIS.php>

## Weather forecast over Delhi/NCR during 24<sup>th</sup> to 27<sup>th</sup> July 2025

### Past Weather:

There has been no significance change in the minimum temperature and fall in the maximum temperature up to 1 to 2°C over Delhi/NCR during the past 24 hours. The maximum and minimum temperatures over Delhi were around 29 to 32°C and 24 to 25 °C respectively. The minimum temperature was below normal by 1 to 2 °C and the maximum temperature was below normal by 3 to 4 °C. Generally cloudy sky conditions with predominant surface wind from the southwest direction with wind speeds up to 12 kmph prevailed during the past 24 hours. Very light to light rainfall has been recorded in most places of Delhi. Partly cloudy sky conditions with a windspeed of less than 18 kmph from the west direction prevailed over the region in the forenoon today.

### Weather Forecast:

**24.07.2025:** Partly cloudy sky. Very light to light rain accompanied by thunderstorms/lightning. The maximum temperatures over Delhi are likely to be in the range of 34 to 36°C. The maximum temperature will be near normal. The predominant surface wind will likely be from the southwest direction with a wind speed of less than 20 kmph in the afternoon. The wind speed will gradually decrease becoming 10-15 kmph from the northwest direction during evening and night.

**25.07.2025:** Partly cloudy sky. Very light to light rain accompanied by thunderstorms/lightning. The maximum and minimum temperatures over Delhi are likely to be in the range of 35 to 37°C and 24 to 26°C respectively. The minimum temperature will be below normal up to 1 to 2°C and the maximum temperature will be above normal by 1 to 2°C. The predominant surface wind will likely be from the west direction with a wind speed of less than 25 kmph during the morning hours. The wind speed will decrease becoming less than 20 kmph from the west direction in the afternoon. It will decrease to less than 18 kmph from the west direction during the evening and night.

**26.07.2025:** Partly cloudy sky. Very light to light rain accompanied by thunderstorm/lightning. The maximum and minimum temperatures over Delhi are likely to be in the range of 33 to 35°C and 24 to 26°C respectively. The minimum temperature will be below normal up to 1 to 2°C and the maximum temperature will be below normal by 1 to 2°C. The predominant surface wind will likely be from the west direction with a wind speed of less than 25 kmph during the morning hours. The wind speed will gradually decrease becoming less than 20 kmph from the west direction in the afternoon. It will decrease to less than 18 kmph from the west direction during the evening and night.

**27.07.2025:** Partly cloudy sky. Very light to light rain accompanied by thunderstorm/lightning. The maximum and minimum temperatures over Delhi are likely to be in the range of 31 to 33°C and 24 to 26°C respectively. The minimum temperature will be below normal up to 1 to 2°C, and the maximum temperature will be below normal by 1 to 3°C. The predominant surface wind will likely be from the northwest direction with a wind speed of less than 20 kmph during the morning hours. The wind speed will gradually decrease becoming less than 15 kmph from the southeast direction in the afternoon. It will increase to less than 20 kmph from the southeast direction during the evening and night.

### Impact expected and Action Suggested due to light to moderate rainfall with thunderstorm/lightning:

- Be cautious and take precautionary measures, though there is the likelihood of thunderstorms/lightning.
- Damage to standing crops, Minor to major damage to power and communication lines due to breaking of branches, Partial damage to vulnerable structures due to strong winds, Loose objects may fly.
- People are advised to keep a watch on the weather for worsening conditions and be ready to move to safer places accordingly, stay indoors, close windows & doors and avoid travel if possible, take safe shelters; do not take shelter under trees, do not lie on concrete floors and do not lean against concrete walls, unplug electrical/ electronic appliances, immediately get out of water bodies, keep away from all the objects that conduct electricity.

### Impact & Action Suggested due to

- ✓ **Extremely heavy falls** very likely at isolated places over Coastal Karnataka on 24<sup>th</sup>; Odisha on 24<sup>th</sup> & 25<sup>th</sup>; Madhya Pradesh on 26<sup>th</sup> & 27<sup>th</sup>; Chhattisgarh on 25<sup>th</sup> & 26<sup>th</sup>; Konkan and Ghat areas of Madhya Maharashtra, Vidarbha and Gangetic West Bengal on 25<sup>th</sup> July.
- ✓ **Very heavy rainfall** over Konkan & Goa, Ghat areas of Madhya Maharashtra during 24<sup>th</sup>-30<sup>th</sup>; Gujarat Region, **East Rajasthan on 27<sup>th</sup> & 28<sup>th</sup> and West Uttar Pradesh on 28<sup>th</sup>**; Arunachal Pradesh and Mizoram & Tripura on 26<sup>th</sup>; Madhya Pradesh, Chhattisgarh during 24<sup>th</sup>-27<sup>th</sup>; Telangana and Coastal Andhra Pradesh & Yanam on 24<sup>th</sup> & 25<sup>th</sup> July.

### Impact Expected

- Localized Flooding of roads, water logging in low lying areas and closure of underpasses mainly in urban areas of the above region.
- Occasional reduction in visibility due to heavy rainfall.
- Disruption of traffic in major cities due to water logging in roads leading to increased travel time.
- Minor damage to kutcha roads.
- Possibilities of damage to vulnerable structure.
- Localized Landslides/Mudslides/landslips/mudslips/landsinks/mudsinks.
- Damage to horticulture and standing crops in some areas due to inundation.
- It may lead to riverine flooding in some river catchments (for riverine flooding please visit Web page of CWC)

### Action Suggested

- Check for traffic congestion on your route before leaving for your destination.
- Follow any traffic advisories that are issued in this regard.
- Avoid going to areas that face the water logging problems often.
- Avoid staying in vulnerable structure.

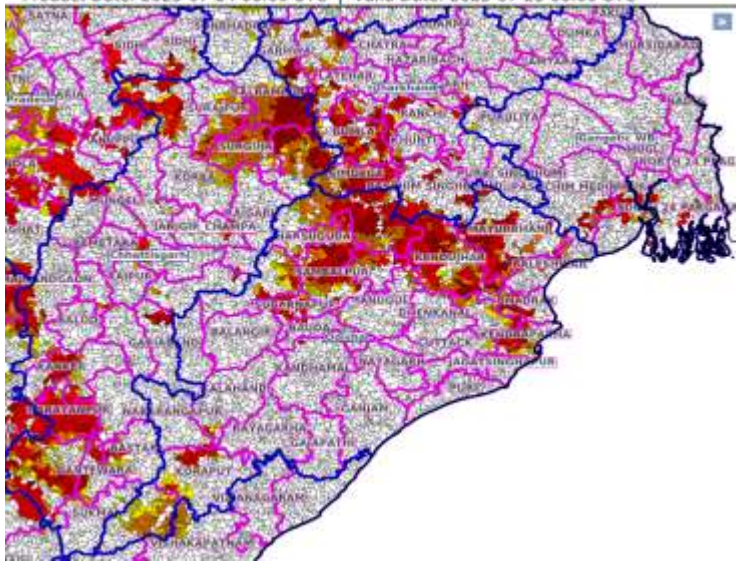
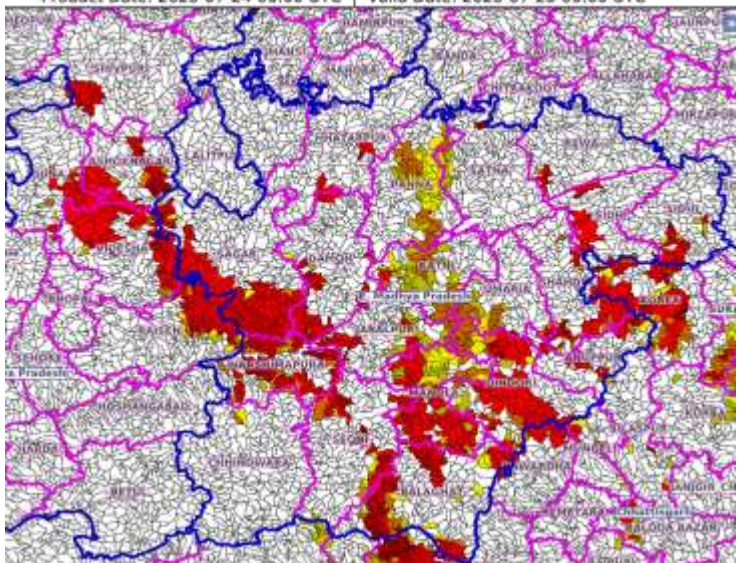
### Agromet advisories for likely impact of Heavy / Heavy to Very Heavy Rainfall

- In **Telangana**, postpone sowing of rice nurseries in **Southern Telangana** and transplanting of rice in **Northern Telangana**. Ensure proper drainage facilities from the fields of paddy, maize, groundnut, cotton, soybean, red gram and vegetables.
- In **Maharashtra**, make arrangement to drain out excess water from paddy and finger millet nurseries, groundnut, vegetables and orchards in **Konkan** and rice and finger millet nurseries in **ghat areas** of **Madhya Maharashtra**. Provide adequate drainage facilities in fields of soybean, cotton, pigeon pea, sorghum, maize, green gram, black gram and turmeric in **Vidarbha**.
- **Madhya Pradesh**, provide adequate drainage from the fields of soybean, rice, maize, pigeon pea and jowar in **Vindhyan Plateau Zone**; from paddy, soybean, maize, urad and sesame in **Kyomore Plateau and Satpura Hill Zone**; from soybean, paddy, pigeon pea, and corn in **Bundelkhand Zone**; from maize, soybean, cotton, and paddy (rice) in **Satpura Plateau Zone**; and from paddy, soybean, maize, jowar, bajra, and vegetables in **Central Narmada Zone**.
- In **Chhattisgarh**, drain out excess water from rice nurseries, soybean, red gram, green gram, black gram, sugarcane and vegetables in **Plain Zone**. In **Northern Hill Zone**, postpone fresh transplanting of rice in low lands. Drain out excess water from transplanted rice and vegetables. Undertake staking / propping in banana and papaya. In **Bastar Plateau Zone**, drain out excess water from rice, minor millets, maize, pulses and oilseeds.
- In **Gangetic West Bengal**, arrange good drainage system for vegetable seed bed and standing vegetable crops and betel vine garden in **Coastal Saline Zone**. In **Laterite and Red Soil Zone** postpone transplanting of rice during the heavy rainfall periods. Drain out excess water from already sown groundnut and vegetables.
- In **Odisha**, postpone sowing of maize and drain out excess water from paddy nurseries and fields of transplanted rice, maize, pulses, vegetable and plantation crops in **North Central Plateau Zone**. Drain out excess water from the fields of paddy, sugarcane, finger millet, groundnut, French bean, plantations and vegetables in **Mid Central Table Land Zone**; paddy, jute, sugarcane, vegetable and papaya in **North Eastern coastal plain Zone**; paddy, cotton, arhar, banana and vegetables crops in **Western undulating zone**.
- In South **Jharkhand**, maintain proper drainage in fields of paddy, maize, and pulses like pigeon pea, moong and urad.
- In **Uttarakhand**, maintain proper drainage channels in fields of rice in **Bhabar and Tarai Zone** and black gram in **Hill Zone**. Make necessary arrangements to drain out excess water from barnyard millet, finger millet, cucumber and rice fields in **Sub Humid SubTropic Zone**.
- In **Kerala**, provide adequate drainage in fields of paddy, coconut, banana and ginger. Postpone nursery / transplanting of rice. Provide staking in vegetables.
- In **Karnataka**, postpone nursery sowing of rice and provide drainage in arecanut fields and banana orchards in **Coastal Zone**. In **Hill Zone**, make arrangements to drain out excess water from rice nurseries, fields of maize, cotton, ginger and plantations of arecanut. In **Southern Transition Zone**, provide proper drainage in arecanut and coconut fields. In **Southern Dry Zone**, provide staking / support to maize, tomato and banana crop. Ensure proper drainage to prevent waterlogging especially in rice, vegetables and spice crops. Cover young seedlings in rice nurseries and vegetables with coverings like plastic sheets or agro-shade nets.



- In **Coastal Andhra Pradesh**, ensure proper drainage channels in fields of maize and direct seeded rice in **Krishna Godavari Zone**.

### Flash flood guidance:

<p>24 hours Outlook for the Flash Flood Risk (FFR) till 1130 IST of 25-07-2025 :</p> <p>Low to Moderate flash flood risk likely over few watersheds &amp; neighbourhoods of following Met Sub-divisions during next 24 hours.</p> <p>Chhattisgarh - Balarampur, Baloda Bazar, Bastar, Bijapur, Bilaspur, Dantewara, Durg, Gariaband, Janjgir_Champa, Jashpur, Kanker, Kondagaon, Korba, Korea, Mahasamund, Mungeli, Narayanpur, Kawardha, Raigarh, Raipur, Rajnandgaon, Sukma, Surajpur and Surguja districts. Odisha - Anugul, Baleshwar, Baragarh, Bauda, Bhadrak, Cuttack, Deogarh, Jajapur, Jharsuguda, Kalahandi, Kandhamal, Kendraparha, Kendujhar, Koraput, Malkangiri, Mayurbhanj, Nabarangapur, Sambalpur and Subarnapur districts. Gangetic West Bengal - Eastmednipur, Haora, North 24 Pragana, Pashchim Medinipur, Puruliya and South 24 Parganas districts. Jharkhand - Bokaro, Garhwa, Gumla, Khunti, Latehar, Lohardaga, Palamu, Ramgarh, Ranchi, Saraikela, Simdega and West Singhbhum districts.</p> <p>Surface runoff/ Inundation may occur at some fully saturated soils &amp; low-lying areas over Area of Concern (AoC) as shown in map due to expected rainfall occurrence in next 24 hours.</p>	<p>Product: NCM FFR   Timescale: 24-hr   Region: "INDIA" Product Date: 2025-07-24 06:00 UTC   Valid Date: 2025-07-25 06:00 UTC</p> 
<p>24 hours Outlook for the Flash Flood Risk (FFR) till 1130 IST of 25-07-2025 :</p> <p>Low to Moderate flash flood risk likely over few watersheds &amp; neighbourhoods of following Met Sub-divisions during next 24 hours.</p> <p>East Madhya Pradesh - Anuppur, Balaghat, Chhatarpur, Chhindwara, Damoh, Dindori, Jabalpur, Katni, Mandla, Narshimpura, Panna, Rewa, Sagar, Satna, Seoni, Shahdol, Sidhi and Umaria districts.</p> <p>Adjoining West Madhya Pradesh - Ashoknagar, Guna, Raisen, Shivpuri and Videsha districts.</p> <p>Surface runoff/ Inundation may occur at some fully saturated soils &amp; low-lying areas over Area of Concern (AoC) as shown in map due to expected rainfall occurrence in next 24 hours.</p>	<p>Product: NCM FFR   Timescale: 24-hr   Region: "INDIA" Product Date: 2025-07-24 06:00 UTC   Valid Date: 2025-07-25 06:00 UTC</p> 

24 hours Outlook for the Flash Flood Risk (FFR) till 1130 IST of 25-07-2025 :

Low to Moderate flash flood risk likely over few watersheds & neighbourhoods of following Met Sub-divisions during next 24 hours.

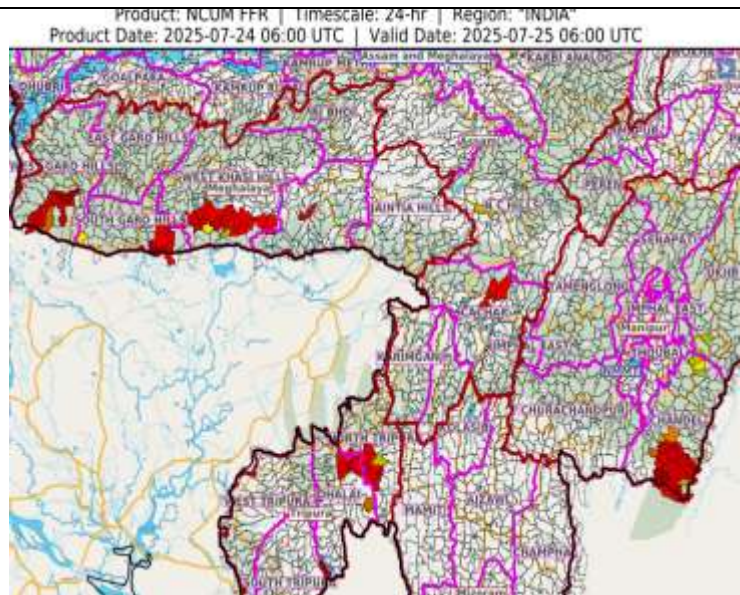
Assam & Meghalaya - Cachar, N.C Hills, East Khasi Hills, South Garo Hills, West Garo Hills and West Khasi Hills districts.

NMMT –

Manipur – Chandel and Ukhrul districts.

Tripura - Dhalai and North Tripura districts.

Surface runoff/ Inundation may occur at some fully saturated soils & low-lying areas over Area of Concern (AoC) as shown in map due to expected rainfall occurrence in next 24 hours.



### Legends & abbreviations:

- ❖ **Heavy Rain:**64.5-115.5mm; **Very Heavy Rain:**115.6-204.4mm; **Extremely Heavy Rain:** >204.4mm.
- ❖ **Obsy:** Observatory; Automatic Weather Station; **ARG:** Automatic Rain Gauge; **dist:** District; **NH:** National Highway; **KVK:** Krishi Vigyan Kendra; **DVC:** Damodar Valley Corporation; **PTO:** Part Time Office, **Aero:** Aerodrome, **IAF:** Indian Air Force.
- ❖ **Region wise classification of meteorological Sub-Divisions:**
  - **Northwest India:** Western Himalayan Region (Jammu-Kashmir-Ladakh-Gilgit-Baltistan-Muzaffarabad, Himachal Pradesh and Uttarakhand); Punjab, Haryana-Chandigarh-Delhi; West Uttar Pradesh, East Uttar Pradesh, West Rajasthan and East Rajasthan.
  - **Central India:** West Madhya Pradesh, East Madhya Pradesh, Vidarbha and Chhattisgarh.
  - **East India:** Bihar, Jharkhand, Sub-Himalayan West Bengal & Sikkim; Gangetic West Bengal, Odisha and Andaman & Nicobar Islands.
  - **Northeast India:** Arunachal Pradesh, Assam & Meghalaya and Nagaland, Manipur, Mizoram & Tripura.
  - **West India:** Gujarat Region, Saurashtra & Kutch, Konkan & Goa, Madhya Maharashtra and Marathawada.
  - **South India:** Coastal Andhra Pradesh & Yanam, Telangana, Rayalaseema, Coastal Karnataka, North Interior Karnataka, South Interior Karnataka, Kerala & Mahe, Tamil Nadu, Puducherry & Karaikal and Lakshadweep.



## LEGENDS

1. अंडमान और निकोबार द्वीपसमूह

2. अरुणाचल प्रदेश

3. असम और मेघालय

4. नागालैंड, मणिपुर, मिजोरम और त्रिपुरा

5. उप-हिमालयी पश्चिम बंगाल और सिक्किम

6. गंगीय पश्चिम बंगाल

7. ओडिशा

8. झारखंड

9. बिहार

10. पूर्वी उत्तर प्रदेश

11. पश्चिम उत्तर प्रदेश

12. उत्तराखंड

13. हरियाणा, चंडीगढ़ और दिल्ली

14. पंजाब

15. हिमाचल प्रदेश

16. जम्मू और कश्मीर और लद्दाख

17. पश्चिम राजस्थान

18. पूर्वी राजस्थान

19. पश्चिम मध्य प्रदेश

20. पूर्वी मध्य प्रदेश

21. गुजरात

22. सौराष्ट्र

23. कोंकण और गोवा

24. मध्य महाराष्ट्र

25. मराठवाड़ा

26. विदर्भ

27. छत्तीसगढ़

28. तटीय आंध्र प्रदेश और यनम

29. तेलंगाना

30. रायलसीमा

31. तमिलनाडु, पुडुचेरी और कराईकल

32. तटीय कर्नाटक

33. आंतरिक उत्तरी कर्नाटक

34. आंतरिक दक्षिणी कर्नाटक

35. केरल और माहे

36. लक्षद्वीप



1. Andaman & Nicobar Islands

2. Arunachal Pradesh

3. Assam & Meghalaya

4. Nagaland, Manipur, Mizoram & Tripura

5. Sub-Himalayan West Bengal & Sikkim

6. Gangetic West Bengal

7. Odisha

8. Jharkhand

9. Bihar

10. East Uttar Pradesh

11. West Uttar Pradesh

12. Uttarakhand

13. Haryana, Chandigarh & Delhi

14. Punjab

15. Himachal Pradesh

16. Jammu & Kashmir and Ladakh

17. West Rajasthan

18. East Rajasthan

19. West Madhya Pradesh

20. East Madhya Pradesh

21. Gujarat

22. Saurashtra

23. Konkan & Goa

24. Madhya Maharashtra

25. Marathwada

26. Vidarbha

27. Chhattisgarh

28. Coastal Andhra Pradesh & Yanam

29. Telangana

30. Rayalaseema

31. Tamilnadu, Puducherry & Karaikal

32. Coastal Karnataka

33. North Interior Karnataka

34. South Interior Karnataka

35. Kerala & Mahe

36. Lakshadweep

## SPATIAL DISTRIBUTION (% of Stations reporting)

% Stations	Category	% Stations	Category
76-100	Widespread (WS/Most Places)	26-50	Scattered (SCT/A Few Places)
51-75	Fairly Widespread (FWS/Many Places)	1-25	Isolated (ISOL)



Fog



Heavy Snow



Cold Wave



Heavy Rain



Dust Storm



Cold Day



Very Heavy Rain



Heat Wave



Ground Frost



Extremely Heavy Rain



Warm Night



Thunder & Lightning



Hot Day



Hailstorm



Hot & Humid



Dust Raising Winds



Strong Surface Winds

### COLOUR CODED WARNING

No Warning (No Action)

Watch (Be Aware)

Alert (Be Prepared To Take Action)

Warning (Take Action)

### Probabilistic Forecast

Terms	Probability of Occurrence (%)
Unlikely	< 25
Likely	25 - 50
Very Likely	50 - 75
Most Likely	> 75

\* Red colour warning does not mean "Red Alert", Red colour warning means "Take Action".

Forecast and Warning for any day is valid from 0830 hours IST of day till 0830 hours IST of next day.

For more details, kindly visit <https://mausam.imd.gov.in> or contact: 011-2434-4599

(Service to the Nation since 1875)

### DEFINITION/CRITERIA

#### Rain/ Snow \*

Heavy: 64.5 to 115.5 mm/cm \*  
Very Heavy: 115.6 to 204.4 mm/cm \*  
Extremely Heavy: > 204.4 mm/cm \*

#### Heat Wave

When maximum temperature of a station reaches  $\geq 40^{\circ}\text{C}$  for plains and  $\geq 30^{\circ}\text{C}$  for hilly regions

(a) Based on Departure from normal

Heat Wave: Maximum Temperature Departure from normal  $4.5^{\circ}\text{C}$  to  $6.4^{\circ}\text{C}$ .

Severe Heat Wave: Maximum Temperature Departure from normal  $\geq 6.5^{\circ}\text{C}$

(b). Based on Actual maximum temperature

Heat Wave: When actual maximum temperature  $\geq 45^{\circ}\text{C}$ .

Severe Heat Wave: When actual maximum temperature  $\geq 47^{\circ}\text{C}$ .

(c). Criteria for heat wave for coastal stations

When maximum temperature departure is  $> 4.5^{\circ}\text{C}$  from normal. Heat Wave may be described provided maximum temperature  $\geq 37^{\circ}\text{C}$ .

#### Warm Night

When maximum temperature remains  $40^{\circ}\text{C}$

Warm Night: When minimum temperature departure  $4.5^{\circ}\text{C}$  to  $6.4^{\circ}\text{C}$ .

Severe Warm Night: When minimum temperature departure  $> 6.4^{\circ}\text{C}$ .

#### Cold Wave

When minimum temperature of a station  $\leq 10^{\circ}\text{C}$  for plains and  $\leq 0^{\circ}\text{C}$  for hilly regions.

(a). Based on departure

Cold Wave: Minimum Temperature Departure from normal  $-4.5^{\circ}\text{C}$  to  $-6.4^{\circ}\text{C}$ .

Severe Cold Wave: Minimum Temperature Departure from normal  $\leq -6.5^{\circ}\text{C}$

(b) Based on actual Minimum Temperature (for Plains only)

Cold Wave: When Minimum Temperature is  $\leq 4.0^{\circ}\text{C}$

Severe Cold Wave: When Minimum Temperature is  $\leq 2.0^{\circ}\text{C}$

(c) For Coastal Stations

When Minimum Temperature departure is  $\leq -4.5^{\circ}\text{C}$  & actual Minimum Temperature is  $\leq 15^{\circ}\text{C}$

#### Cold Day

When minimum temperature of a station  $\leq 10^{\circ}\text{C}$  for plains and  $\leq 0^{\circ}\text{C}$  for hilly regions

Based on departure

Cold Day: Maximum Temperature Departure from normal  $-4.5^{\circ}\text{C}$  to  $-6.4^{\circ}\text{C}$ .

Severe Cold Day: Maximum Temperature Departure from normal  $\leq -6.5^{\circ}\text{C}$

#### Fog

Phenomenon of small droplets suspended in air and the horizontal visibility  $< 1\text{km}$

Moderate Fog: When the visibility between 500-200 metres

Dense Fog: when the visibility between 50- 200 metres

Very Dense Fog: when the visibility  $< 50$  metres

#### Thunderstorm

Sudden electrical discharges manifested by a flash of light (Lightning) and a sharp rumbling sound (thunder)

#### Dust/Sand Storm

An ensemble of particles of dust or sand energetically lifted to great heights by a strong and turbulent wind.

#### Frost

Ice deposits on ground

Air temperature  $\leq 4^{\circ}\text{C}$  ( over Plains)

#### Squall

A strong wind that rises suddenly, lasts for atleast 1 minute.

Moderate: Wind speed 52-61 kmph

Severe: Wind speed 62-67 kmph

Very Severe: Wind speed  $> 67$  kmph

#### Sea State

Effect of various waves in the sea over specific area

Rough to very rough: Wind speed 41-62 kmph (22-33 knots) & Wave height 2.5-6 metre

High to very high: Wind speed 63-117 kmph ( 34-63 knots) & Wave height 6-14 metre

Phenomenal: Wind speed  $> 117$  kmph ( $> 63$  knots) & Wave height  $> 14$  metre

#### Cyclone

Cyclonic Storm: Wind speed 62-87 kmph (34-47 knots)

Severe Cyclonic Storm: Wind speed 88-117 kmph (48-63 knots)

Very Severe Cyclonic Storm: Wind speed 118-165 kmph (64 - 89 knots)

Extremely Severe Cyclonic Storm: Wind speed 166-220 kmph (90 -119 knots)

Super Cyclone Storm: Wind speed  $> 220$  kmph ( $> 119$  knots)

\* Red colour warning does not mean "Red Alert", Red colour warning means "Take Action".

Forecast and Warning for any day is valid from 0830 hours IST of day till 0830 hours IST of next day.

For more details, kindly visit <https://mausam.imd.gov.in> or contact: 011-2434-4599

(Service to the Nation since 1875)

**Hot and Humid:** When maximum temperatures remain  $3^{\circ}\text{C}$  above normal along with the above normal relative humidity.